

Consignment Module

- Introduction & Flow
 - Introduction
 - Consignment with Material Flow
 - Consignment with Value Flow
- Inter-Linked Modules
 - Connected Modules

Introduction & Flow

Introduction

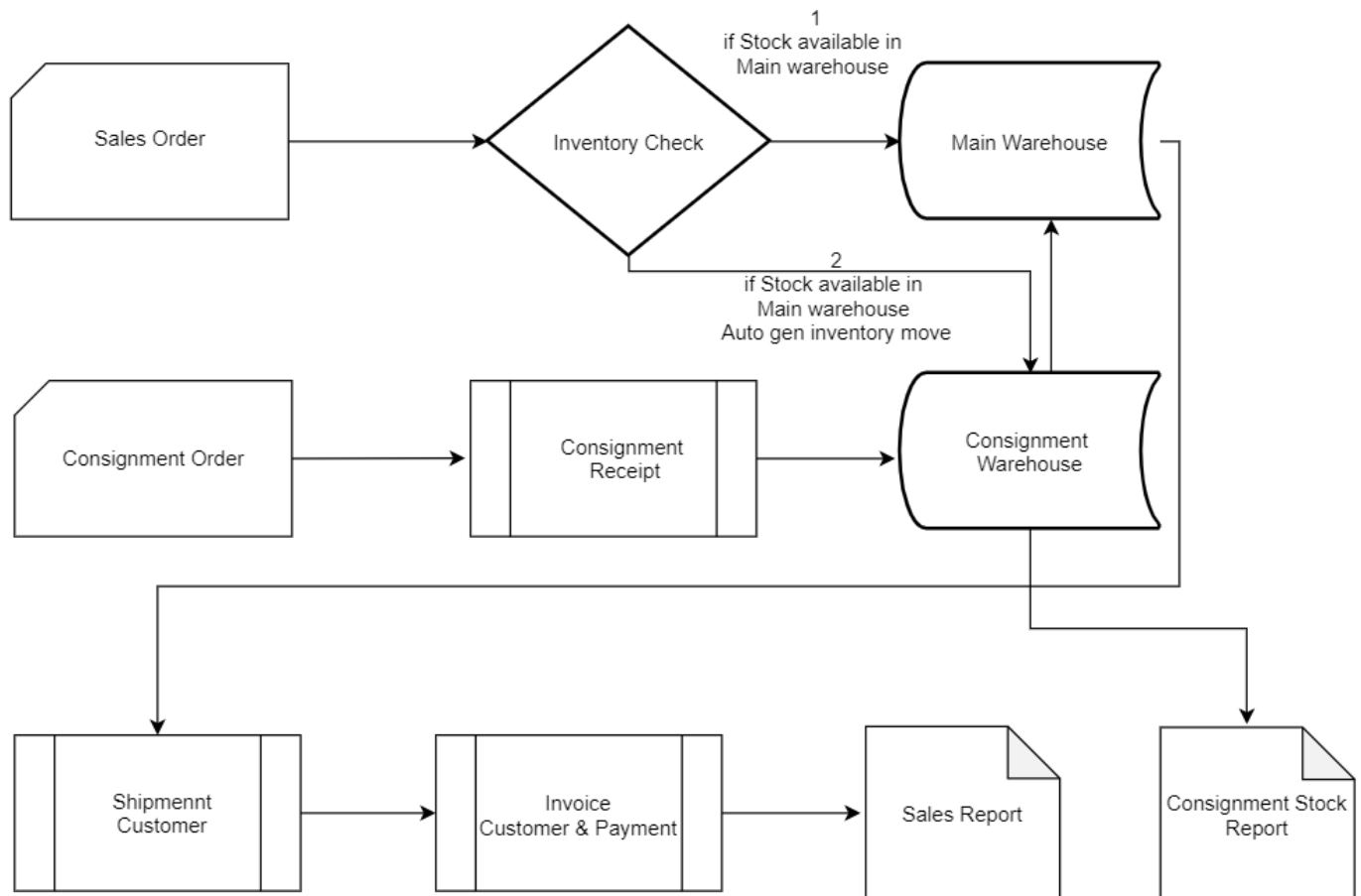
Overview

The consignment process is keeping the stock in customers premises, but until the customer consumes or sell it, it will be a part of the company. (It is not mandatory that we should stock the consignment stock in the customer's premises, we can store it in the company premises too).

Business Case

In Trading company vendor who stores their drill bits in customer place as consignment stock and if customer received an order. stock will move from consignment warehouse to customer warehouse and they raise sales invoice for the product and receive the payment from the consumer . According to the customer sale invoice amount will be payable to the vendor.

Consignment with Material Flow



Input

If no stock found in the main warehouse you should raise stock in the consignment warehouse. To increase stock create Consignment order.

Process

Generate consignment receipt from consignment order and the system will update the stock in a consignment warehouse through the material receipt.

Note: The system will auto-generate the material receipt when consignment receipt document completed.

Report

- 1) We can take Consignment stock report vendor wise from store stock report
- 2) Consignment notice
- 3) Consignment Transaction Report
- 4) Sales Report

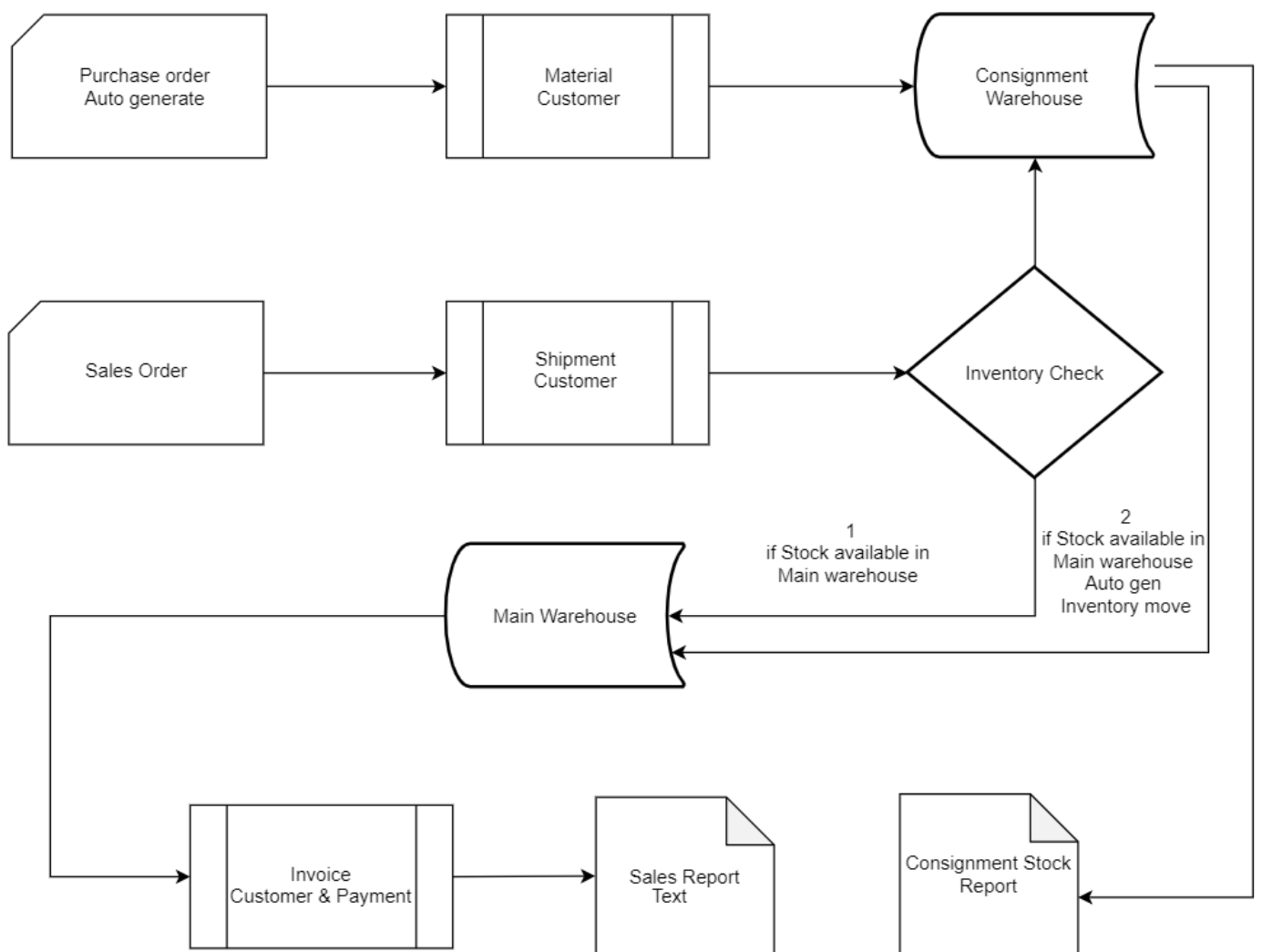
Data transfer

The stock move from Consignment warehouse to the main warehouse.

Calculation

- 1) If the stock is available in the main warehouse you can do shipment and raise sales invoice.
- 2) If a stock is not available in the main warehouse, then it will move from consignment warehouse while sales order completed.

Consignment with Value Flow



Input

In this flow, Once received customer Purchase order, we should raise a sales order for that customer.

Process

Create shipment receipt against the sales order. Once we process the shipment document action as complete, the system will check the inventory.

We need to generate the Purchase order against consignment warehouse & create a material receipt.

Report

- 1) We can take Consignment stock report vendor wise from store stock report
- 2) Consignment notice
- 3) Consignment Transaction Report
- 4) Sales Report

Data transfer

If the stock available in the inventory it will allow you to sell the product.

Inventory move document will auto-generate when stock not available in the main warehouse. Then it will move stock from consignment warehouse to the main warehouse.

Calculation

If no stock found in the main warehouse you should create a Purchase order to increase the stock.

- 1) If the stock is available in the main warehouse you can do the shipment.
- 2) If the stock is not available in the main warehouse, then it will move from the consignment warehouse while shipment completed.

Inter-Linked Modules

Connected Modules

Preceding Module

Succeeding Module