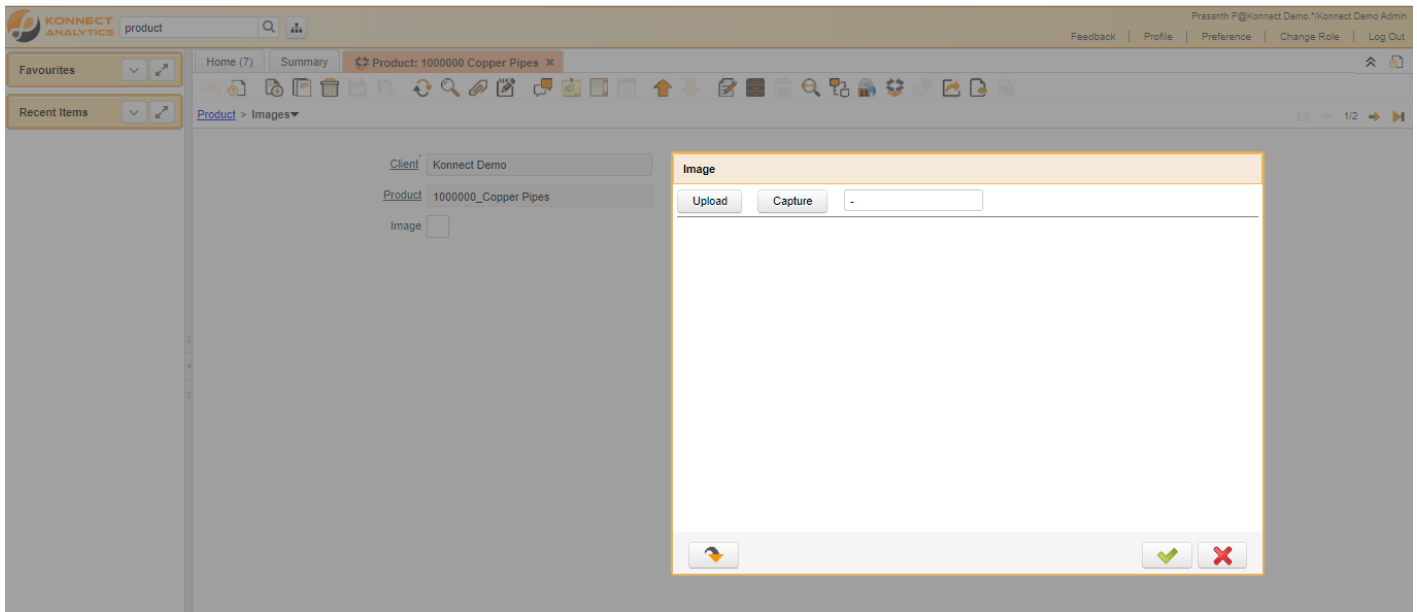


Images



Critical Fields

1. Image : This field is used to mention the image of the Product . Images and Icon can be used to display supported graphic formats (gif, jpg, png). You can either load the image (in the database) or point to a graphic via a URI (i.e. it can point to a resource, http address)

Critical & onetime setup fields

1. Organization Field- This Field is used to select the organization which you are going to process the document.

Non-Critical Fields

1. Default : The Default Checkbox indicates if this record will be used as a default value.
2. Record Deleted : It used to mention the record deleted .

Zoom condition's

Validation

Revision #5

Created Mon, Apr 13, 2020 8:39 PM by [Prasanth P](#)

Updated Wed, Aug 9, 2023 3:19 PM by [Mukund Tulshiram](#)