

# Production flow

- Introduction & Flow
  - Introduction
  - Module Flow
- Inter-Linked Modules
  - Connected Modules

# Introduction & Flow

# Introduction

## **Overview**

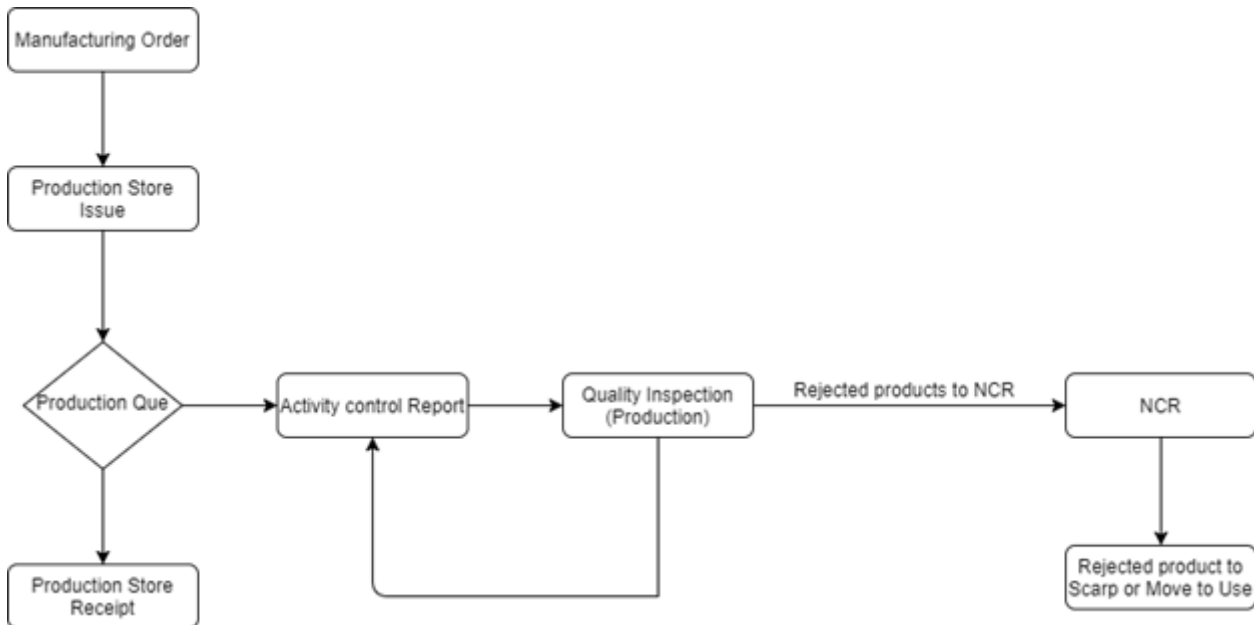
Production process is the key for the manufacturing Industries where the output of the demand from the customer is met. While production process many supporting activities will be done by inter linked departments. Production process includes technical and also commercial activities of an industry. General production flow is explained as per our Konnect ERP system in this document.

---

## **Business Case**

In a pump industry the marketing person will raise the sales order (Demand Order) after various stages of marketing activities. Once the sales order is released, Planning person will release the Manufacturing order. Based on the manufacturing order Production supervisor will allocate the work to the layman and receive the material required from stores and process the production activities and provide the Finished goods to the store person.

# Module Flow



---

## Input

- 1) Product
- 2) Bill of Material
- 3) Manufacturing Work Flows Routing
- 4) Manufacturing Order

---

## Process

- 1) Production Que

## 2) Activity Control Report

---

# **Report**

1) Manufacturing Orders Review Template

2) Store Stock Details

3) Manufacturing Order Overview Report

4) Sales To Production Report

5) Production Activity

6) Mo order status Report

7) Mo operation status Report

---

# **Data transfer**

1) Inventory Management

a) Production Store Issue

b) Production Issue Receipt

---

# **Calculation**

# Inter-Linked Modules

# Connected Modules

## **Preceding Module**

- 1) Sales Management

## **Succeeding Module**

- 1) Quality Management
- 2) Inventory Management