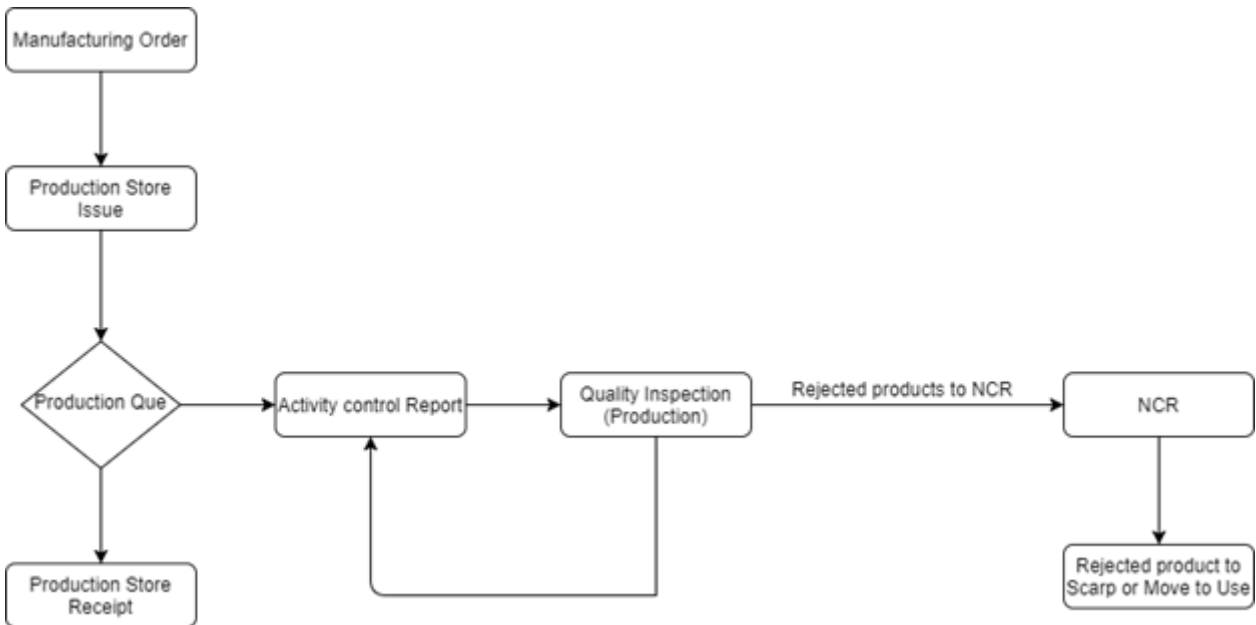


# Module Flow



---

## Input

- 1) Product
- 2) Bill of Material
- 3) Manufacturing Work Flows Routing
- 4) Manufacturing Order

---

## Process

- 1) Production Que
  - 2) Activity Control Report
-

## **Report**

- 1) Manufacturing Orders Review Template
  - 2) Store Stock Details
  - 3) Manufacturing Order Overview Report
  - 4) Sales To Production Report
  - 5) Production Activity
  - 6) Mo order status Report
  - 7) Mo operation status Report
- 

## **Data transfer**

- 1) Inventory Management
    - a) Production Store Issue
    - b) Production Issue Receipt
- 

## **Calculation**

---

Revision #8

Created Sun, Apr 19, 2020 5:57 AM

Updated Fri, Nov 8, 2024 3:37 PM by **Vijayakumar S**