

Quality Flow

- Introduction & Flow
 - Introduction
 - Quality Inspection (Single)
 - Quality Inspection (Bulk)
 - Quality Inspection (Production)
- Inter-Linked Modules
 - Connected Modules

Introduction & Flow

Introduction

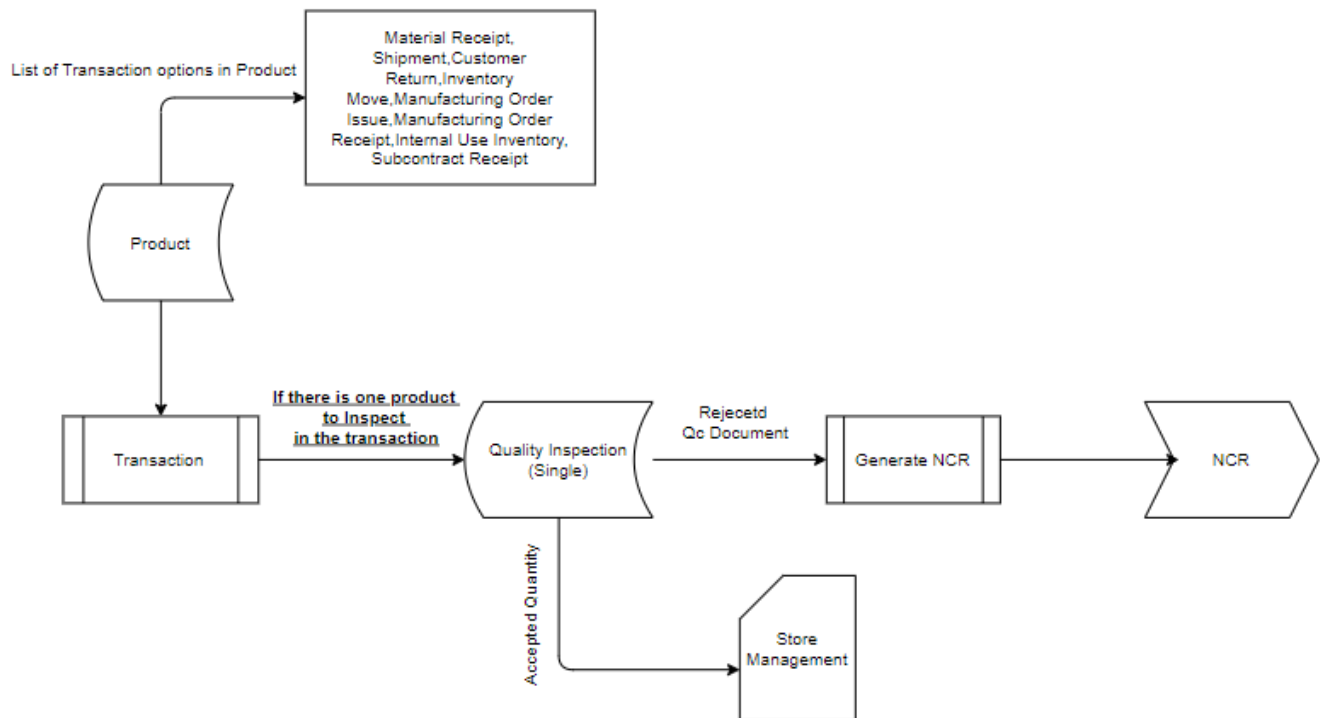
Overview

Quality Process is set to be one of the key process in an Industry Quality is used while getting the product from vendor and while sending to customer. For Inspecting a product quality persons use Quality test plans. In or Konnect ERP all these tracking can be done.

Business Case

In Manufacturing Industry while we receive a product from vendor concern products will be inspected and accepted Products will be move to stock and rejected products will be send to vendor. And NCR will be raised with CAPA (Corrective & Preventive Actions). And During Production Inspection or In process Inspection accepted quantity will be move to next operation and Rejected qty will be moved to scrap.

Quality Inspection (Single)



Input

- 1) Quality Parameter
- 2) Quality Test Plan
- 3) Product
- 4) Transactions

Process

- 1) Quality Inspection Single
- 2) Generate NCR

Report

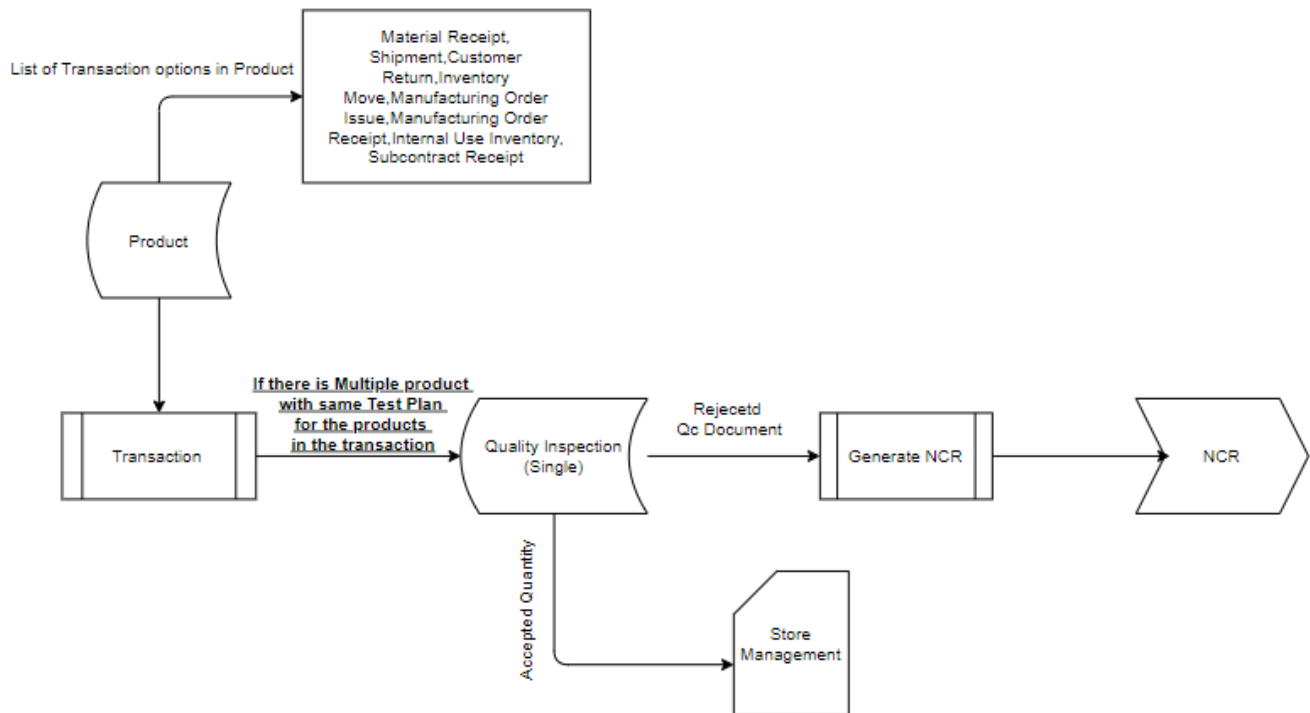
- 1) Inspection Pending Report Purchase
- 2) Purchase To quality summary report
- 3) Quality Detail

Data transfer

- 1) Inventory Management

Calculation

Quality Inspection (Bulk)



Input

- 1) Quality Parameter
- 2) Quality Test Plan
- 3) Product
- 4) Transactions

Process

- 1) Quality Inspection Single
- 2) Generate NCR

Report

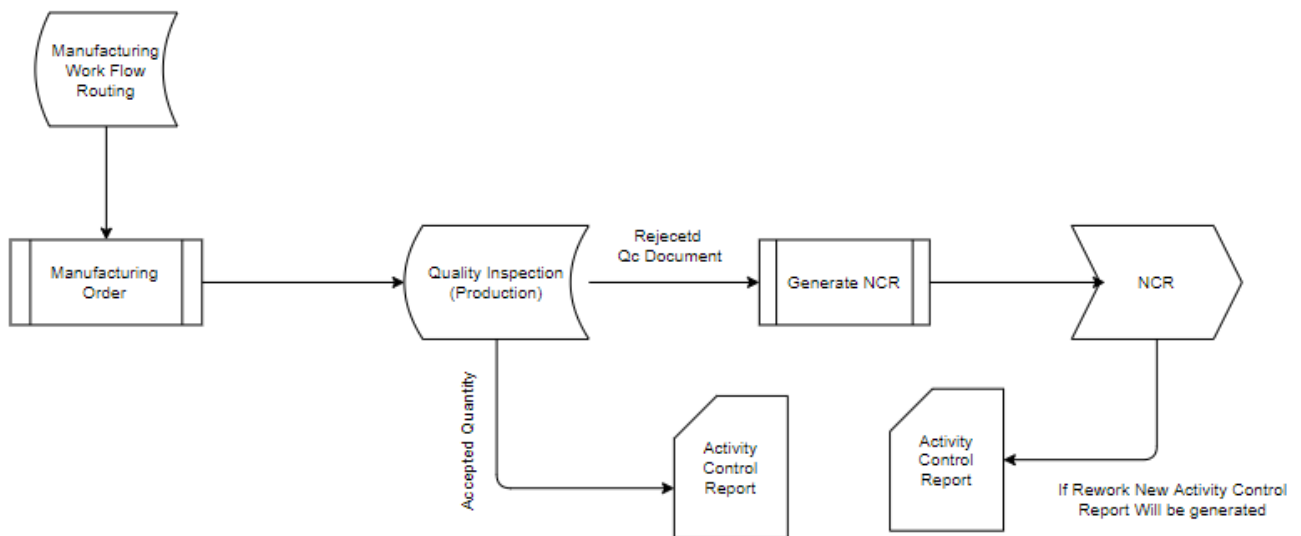
- 1) Inspection Pending Report Purchase
- 2) Purchase To quality summary report
- 3) Quality Detail

Data transfer

- 1) Inventory Management

Calculation

Quality Inspection (Production)



Input

- 1) Manufacturing Workflows Routing
- 2) Manufacturing Order

Process

- 1) Quality Inspection (Production)
- 2) Generate NCR
- 3) NCR

Report

- 1) In process Inspection Report
- 2) Inspection Pending Report (In process)

Data transfer

- 1) Activity Control Report
- 2) Inventory Management

Calculation

Inter-Linked Modules

Connected Modules

Preceding Module

- 1) Sales Management
- 2) Inventory Management
- 3) Purchase Management
- 4) Production Management

Succeeding Module

- 1) Store Management