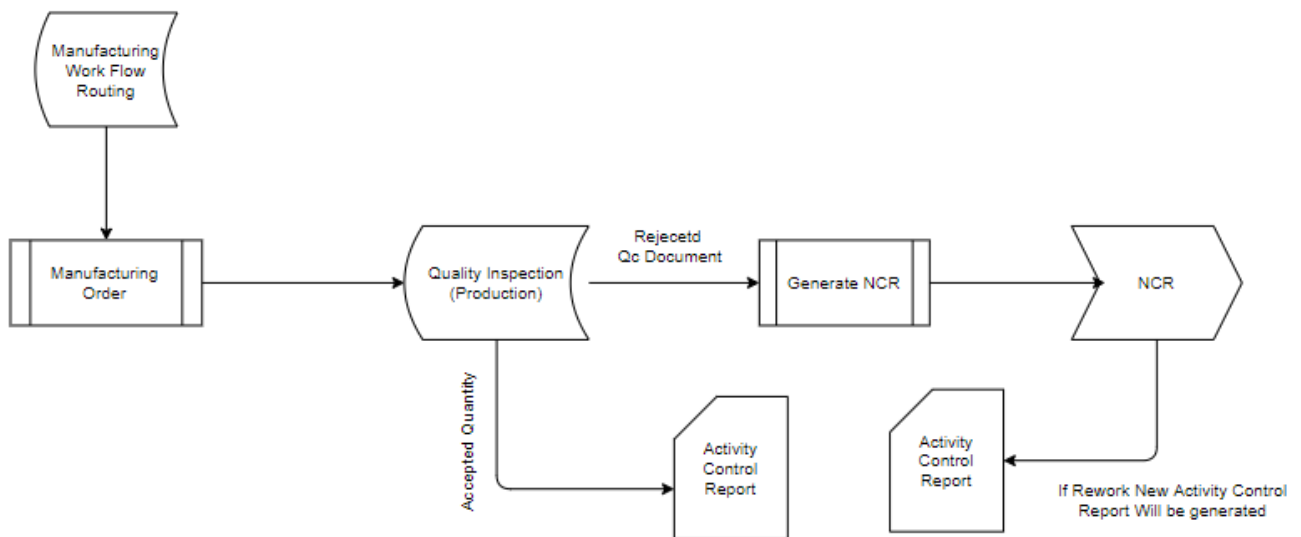


Quality Inspection (Production)



Input

- 1) Manufacturing Workflows Routing
- 2) Manufacturing Order

Process

- 1) Quality Inspection (Production)
- 2) Generate NCR
- 3) NCR

Report

- 1) In process Inspection Report
- 2) Inspection Pending Report (In process)

Data transfer

- 1) Activity Control Report
- 2) Inventory Management

Calculation

Revision #3

Created Fri, May 22, 2020 2:16 AM

Updated Fri, May 22, 2020 3:14 AM