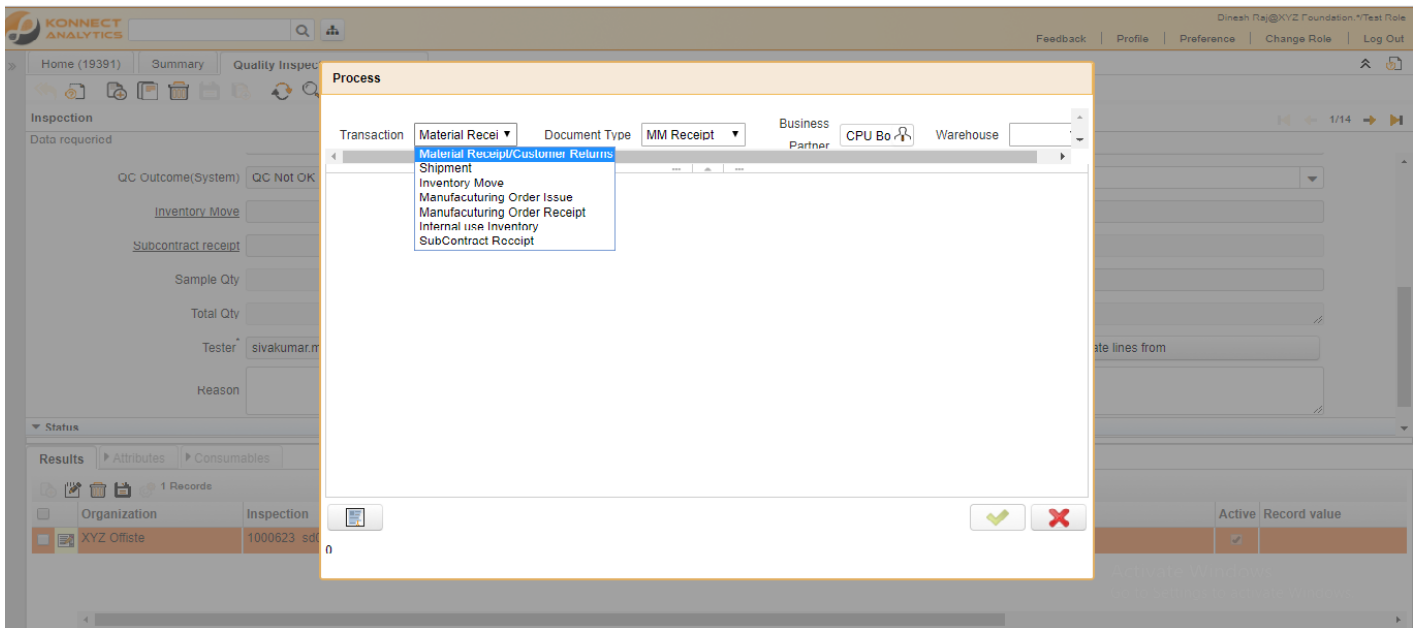


# Actions



## Verify

## Create lines from

Transactions- There are multiple transaction that can be Inspected using this window listed below,

- a) Material Receipt/Customer Return- The material from vendor and return rejection material from customer.
- b) Shipment- Before sending to customer, Finished goods can be inspected.
- c) Inventory Move- Moving the Product Internally form one warehouse to other. Material can be Inspected.
- d) Manufacturing Order Issue- While issuing the product to Production Material can be inspected.

e) Manufacturing Order Receipt- While receiving the Finished goods to stock after production completion.

f) Internal Use Inventory- While you consume the product internally material can be inspected.

g) Subcontract Receipt- While receiving the Material from the subcontractor material can be inspected.

---

## **Copy from/lines**

## **<custom actions>**

---

Revision #4

Created Thu, Apr 16, 2020 4:46 AM

Updated Fri, Aug 11, 2023 1:21 PM by **Mukund Tulshiram**