

# Quality Inspection (Production)

- Window Introduction
  - Introduction
- Tabs
  - Inspection
  - Results
  - Consumables
  - Quality Tools
- Document Actions
  - Validations
  - Actions
- Process
- Videos
- Reports
- Quality Tools

# Window Introduction

# Introduction

## **Introduction**

Inspection Production window is used to Inspect the operations during producing a component, This window provide you the inspection result based on the test plan provided.

---

## **Business Example**

In a pump Industry there will be Inspection during production a component called as stage inspection or process inspection. This window is used to carry the Inspection process.

# Tabs

Tabs

# Inspection

KONECT ANALYTICS inspect

Home (19391) Summary \*Quality Inspection(Product...)

Feedback Profile Preference Change Role Log Out

Inspection

Inserted

Client XYZ Foundation

Organization

Document No

Tester Dinesh Raj

Target Document Type

Inspection Date 15/04/2020

Name

Description

Manufacturing Order

Quality plan

Manufacturing Cost Collector

Manufacturing Order Workflow

Product

Attribute Set Instance

Warehouse

QC Warehouse

QC Outcome(System) QC Not OK

QC Outcome(User)

Reason

Sample Qty 0.00

Total Qty 0.00

Document Status Drafted

Document Action

Reference Document

Create lines from

Activate Windows  
Go to Settings to activate Windows.

## Critical Fields

- 1) Name- Enter the Name of the document.
- 2) Tester- Name of the person who is inspecting the component.

## Critical & onetime setup fields

- 1) Organization Field- This Field is used to select the organization which you are going to process the order.

2)Target Document Type- This Field is used to select the type of the document that you are going to process.

---

## **Non-Critical Fields**

1. Description: To note Specifics required with documents and to describe other important information.
  2. Reason: Reason for QC Outcome (User), being entered by user manually.
- 

## **Serial number/Lot number (ASI)**

Serial number can be selected from previous document.User cant create new serial number in this document.

---

## **Zoom condition's**

- 1) NCR
- 

## **Customization**

Tabs

# Results

KONNECT ANALYTICS inspect

Home (19391) Summary Quality Inspection(Producti... x

Inspection > Results

Client\* XYZ Foundation

Organization\* \*

Activity control ID 80653\_Fabrication\_82390

Operation Name Inspection

Resource Inspection Fab

Quality plan Visual Inspection

Inspection 1000691\_MO:80653

Plan parameter 1000675

Parameter Visual

Parameter type Qualitative Parameter(Good,Bad,etc)

QC Outcome(User) QC Not OK

Sign

Value Low

Option(Inclusive,Exclusive)

Value High

Record value

Reason

☒ Active

Sample Qty 5.00

Total Qty 5.00

Activate Windows  
Go to Settings to activate Windows.

## Critical Fields

- 1) Parameter- Multiple parameters may be there for inspecting a product.This will be shown from Test Plan which the user selected for the product.
- 2) Record Value- The value that acquired in real during Inspecting the parameter need to be entered.
- 3) Total Qty- Number of quantity which are inspected.
- 4) Qc outcome (User)- If decision from the system need to changed this option can be used.For using this option need to configure in the test plan against the parameter.

## **Critical & onetime setup fields**

---

## **Non-Critical Fields**

---

## **Serial number/Lot number (ASI)**

---

## **Zoom condition's**

---

## **Validation**



Tabs

# Consumables

KONECT ANALYTICS inspect

Dinesh Ray@XYZ Foundation."Test Role

Feedback | Profile | Preference | Change Role | Log Out

Home (19391) Summary \*Quality Inspection(Product... x

Inspection > Consumables

Inserted

Client\* XYZ Foundation

Inspection 1000691\_MO:80653

Description

Product

Quantity 0

Organization\* HQ

Quality Consumables

Phys.Inventory Line

UOM

Charge

Activate Windows  
Go to Settings to activate Windows.

## Critical Fields

- 1) Product- Enter or select the product that needs to be consumed.
- 2) UOM: Unit of Measurement of product is to be inspected.
- 3) Quantity- This field represents the quantity needs to be consumed additionally while inspecting.
- 4) Charge- For posting cost of the consumed product.

---

## Critical & onetime setup fields

---

## **Non-Critical Fields**

---

## **Serial number/Lot number (ASI)**

---

## **Zoom condition's**

---

## **Validation**

Tabs

# Quality Tools

It's use to add asset and change test plan.

# Document Actions

# Validations

## **Save**

- 1) System will check whether all the Mandatory Fields are filled.
  - 2) System will generate the document number.
  - 3) System will check whether a valid quality test plan is provided.
- 

## **Delete**

System will delete the order and its history from the database. This can be done only when the document status is Draft status and In progress Status.

---

## **Document action prepare**

- 1) System will check the Product, Test plan, Previous document and convert the document status to In progress.
  - 2) System will check the Period control for the document date whether it is open.
- 

## **Document action complete**

System will complete the document and keep the order ready for processing in production queue and change the document status to complete.

---

## **Document action void/reverse correct actual**

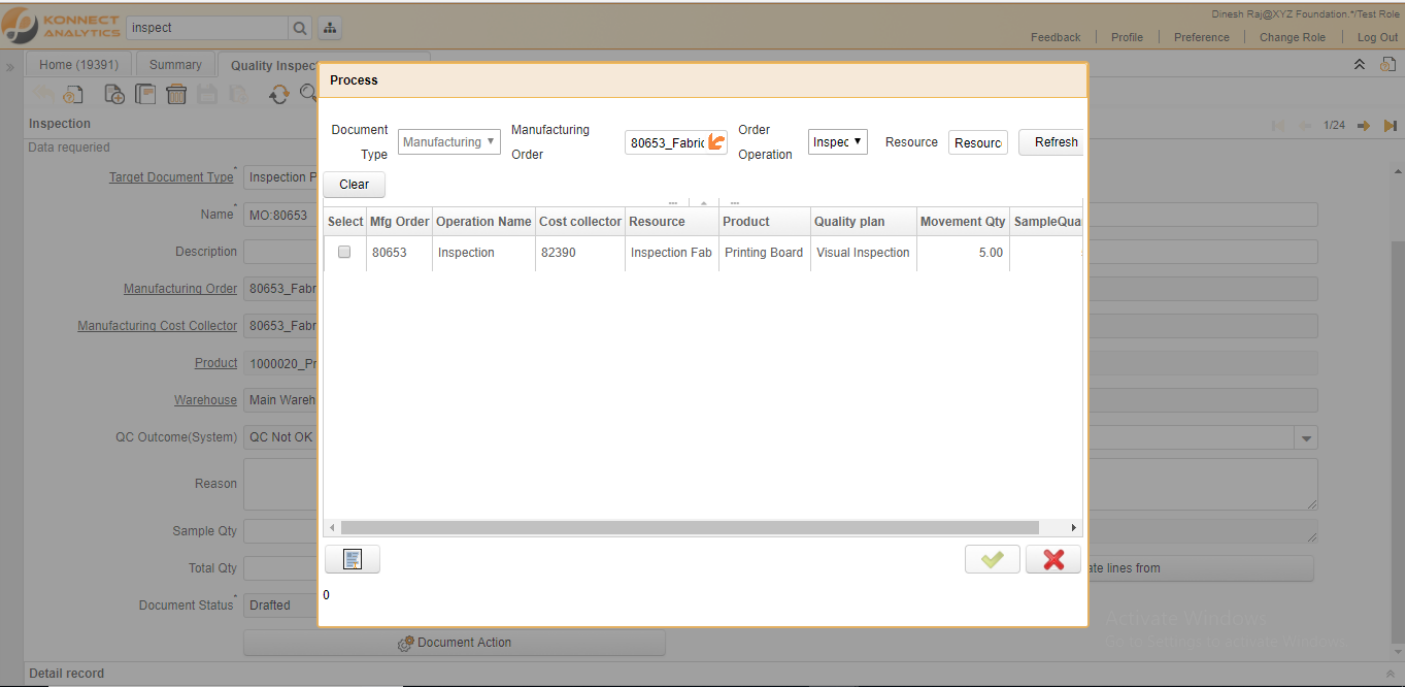
1) Void- system will reverse all the cost transaction data's and change the document status to Void

---

## **Document action close**

1) system will check whether all the activity for the document is completed and change the Document status to close.

# Actions



## Verify

## Create lines from

- 1) Manufacturing order- Select the manufacturing order number which need to be inspected.
- 2) Order operation- Select the operation which needs to be inspected.
- 3) Resource- This Field displays the resource of the selected operation.
- 4) Refresh- This button displays the data as per the selected criteria.

5) Clear- this button helps to clear the selected criteria.

---

**Copy from/lines**

---

**<custom actions>**



# Process

## **Create Lines from**

Create lines from process is used to create the Inspection data details like product and document numbers from the Material Receipt or Job Work Receipt or Customer Return Document Types.

---

## **Generate NCR**

Generate NCR process is used to generate NON Confirmation Report for the Inspected Document. This Process creates New NCR Document in that window.

# Videos

# Reports

Sr.No	Report Name	Report Purpose
1	Inprocess Inspection Report	This Report is used to get details about the inspection Production .
2	Inspection Pending Report (InProcess)	This Report Gives the Details about the Inspection Pending Production With Pending Quantity and Activity Control Report No.

3		This Report gives Inspection Pending Purchase Report Inspection Purchase details with Pending Quantity.
---	--	---

# Quality Tools

It's use to add asset and change test plan.