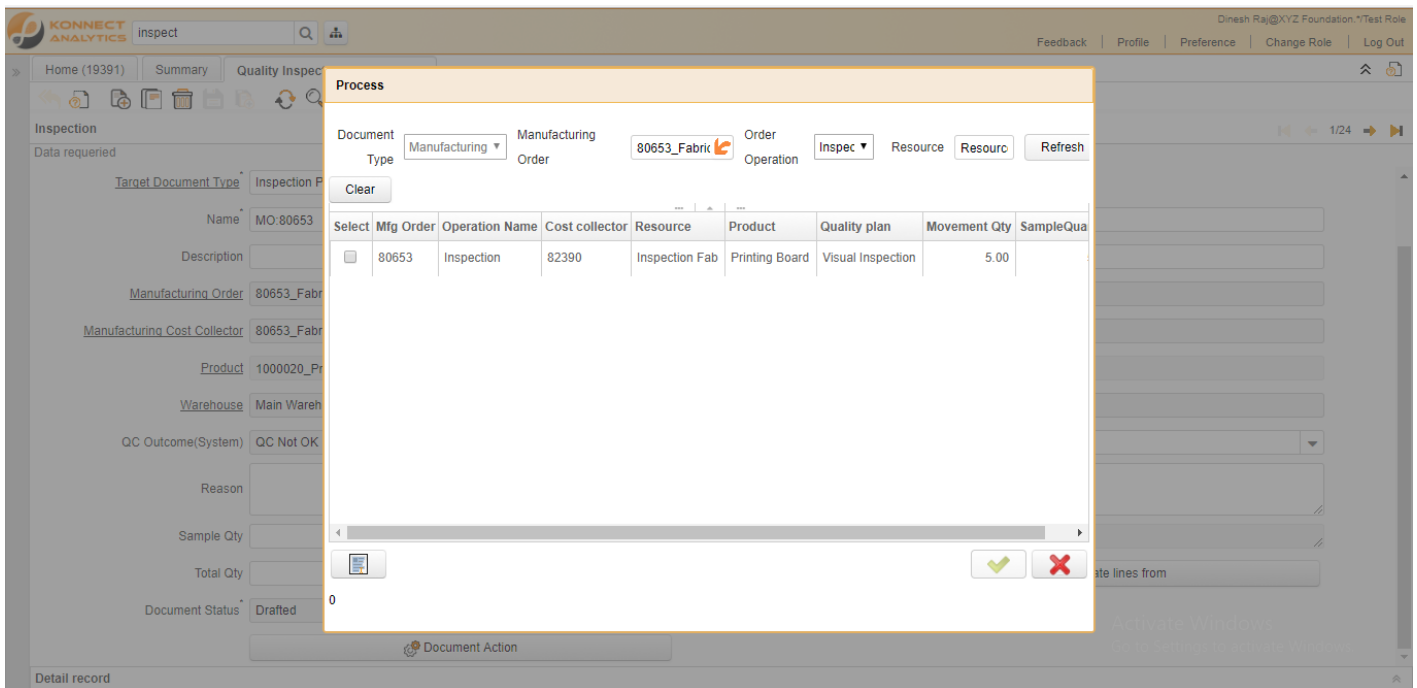


# Actions



## Verify

## Create lines from

- 1) Manufacturing order- Select the manufacturing order number which need to be inspected.
- 2) Order operation- Select the operation which needs to be inspected.
- 3) Resource- This Field displays the resource of the selected operation.
- 4) Refresh- This button displays the data as per the selected criteria.
- 5) Clear- this button helps to clear the selected criteria.

## Copy from/lines

---

## <custom actions>

---

Revision #5

Created Thu, Apr 16, 2020 4:49 AM

Updated Fri, Aug 11, 2023 1:32 PM by [Mukund Tulshiram](#)