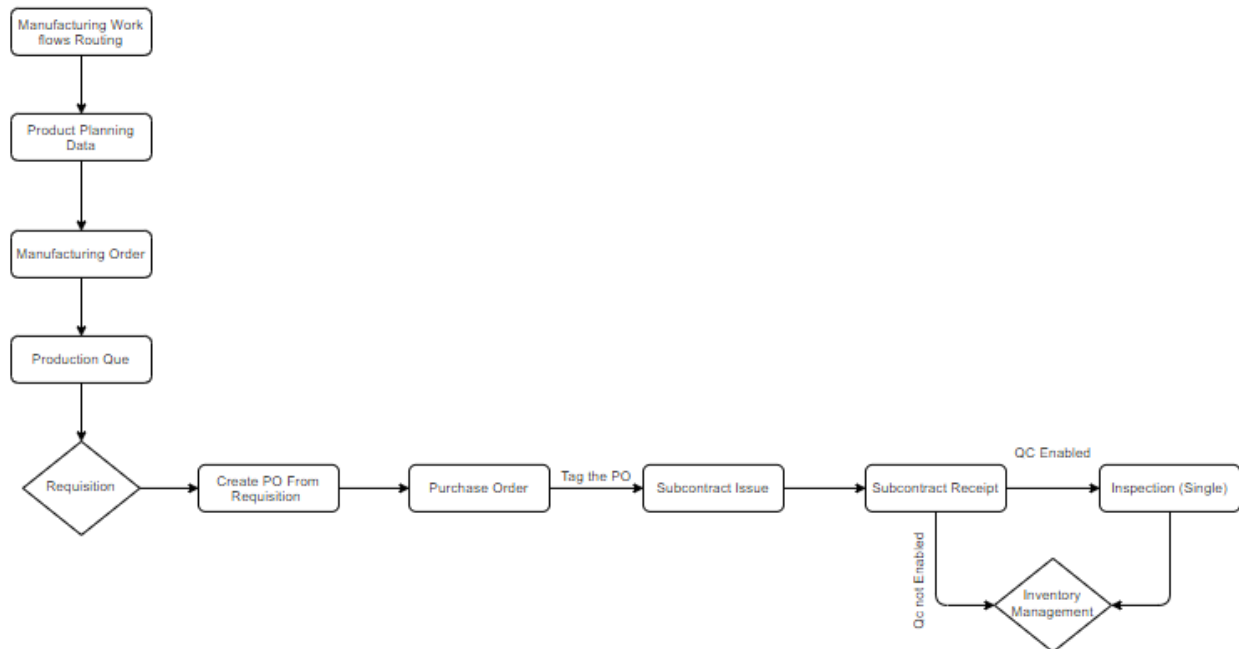


# Module Flow



## Input:

- 1) Manufacturing Work Flows Routing
- 2) Product Planning Data
- 3) Manufacturing Order

## Process:

- 1) Production Que
- 2) Requisition
- 3) Create PO From Requisition
- 4) Purchase Order

- 5) Subcontract Issue
- 6) Subcontract Receipt
- 7) Quality Inspection

## **Report:**

- 1) Subcontract Issue Overview Report
- 2) Subcontract open Receipt Report
- 3) Subcontract Receipt Overview Report

## **Data transfer:**

- 1) Inventory Management

## **Enhancement:**

- a) KA\_SUBCONTRACT\_MOVEMENT\_CREATE - This will direct the system to create a Subcontract movement instead of regular Inventory Movement to the Subcontract warehouse
- b) KA\_SUBCON\_PRODUCT - Specifies the default product to be used for Subcontract PR/PO, the value(search key) should be mentioned here, the other place is resource master.
- c) KA\_SUBCON\_PURCHASE\_MANDATORY- In subcontract Issues, if a purchase order is nonmandatory configuration can be used. The default value is True.
  - 1) Node Product Not mandatory if fixed either in resource master or globally(delivered in the previous ticket)
  - 2) New Create from line option in the Issue document that will pull all the items from MO Bom also can be pulled from exclusive BOM.
  - 3) Subcontract Receipt Create lines enhanced to show all 3 types of items now.
    - a) Issue Items(all types)
    - b) PO line items & Charges

## c) WIP Items(new) - MO Header material and Phantom Items in BOM

---

Revision #10

Created Mon, May 4, 2020 4:48 PM

Updated Tue, Aug 8, 2023 11:24 AM by [Logesh D](#)